

# Kitchen Display Terminal (IP65) : KVS-158B / KVS-158BT (15") & KVS-178B / KVS-178BT (17")

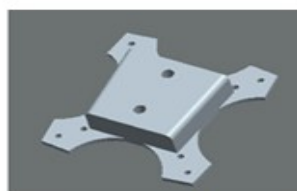


## Features:

- Powered by Intel® Celeron® Processor J1900 CPU
- Running Windows 7 Standard Embedded
- KVS-178B/ BT:  
17" Industrial Grade TFT panel (1280 x 1024)
- KVS-158B/BT:  
15" Industrial Grade TFT panel (1024 x 768)
- Metal enclosure, sealed design
- Cables are sealed with the housing
- Support VESA mounting
- With optional ELO touch (USB / RS232)
- With optional KVS software (Heng Yu Easy-KVS®)
- With external power adaptor
- Complied with IP65



Sealed Cable Design



Vesa mounting



Metal Keypad MK15E

## Heng Yu Technology (Hong Kong) Limited

Room 1502-05, Nan Fung Commercial Center, 19 Lam Lok Street, Kowloon Bay, Hong Kong

Email: [hy\\_sales@hengyu-tech.com](mailto:hy_sales@hengyu-tech.com)

Phone: +852-23941852

Web: <http://www.hengyu-tech.com>

Fax: +852-23941865

# Kitchen Display Terminal (IP65) :

## KVS-158B / KVS-158BT (15") & KVS-178B / KVS-178BT (17")

### Product Specification

Model		KVS-158B	KVS-158BT	KVS-178B	KVS-178BT
<b>Processor Board</b>	CPU	Intel® Celeron® Processor J1900 2GHz			
	RAM	4GB Dual-channel DDR3L 1600 MHz			
	Storage	128G DOM			
<b>Software</b>	OS	Windows 7 Standard Embedded			
	KVS Software (Optional)	Heng Yu Easy-KVS (ver 1.1)			
<b>Panel</b>	Viewing Area	15 inches		17 inches	
	Resolution	1024 x 768		1280 x 1024	
	Active Display Area (mm)	304.128(W) x 228.096(H)		337.920(W) x 270.336(H)	
	Display Color	16.7M colors			
	Response Time	8 ms			
	Contrast Ratio	600:1 (typ.)		1000:1 (typ.)	
	Viewing Angle	80°U / 80°D/ 85°L / 85°R			
	Luminance	250 cd/m <sup>2</sup> @ 7.5mA		350 cd/m <sup>2</sup> @ 7.5mA	
<b>Interfaces</b>	LAN	10/100/1000Mbps			
	USB	2 x USB type A Female			
	RS232	Standard DB9 Male			
	Audio	3.5mm Audio Jack			
<b>Power Adaptor</b>	Input	Universal AC100~240V, 50/60Hz			
	Output	DC +12V,5A			
<b>Power</b>	Management	VESA DPMS			
	Consumption	≤24W			
<b>Environment</b>	Storage Temperature	-25°C ~ 70°C			
	Operating Temperature	0°C ~ 42°C			
	Operating Humidity	10% ~ 85%			
<b>Mounting</b>	Standard	VESA (100mm x 100mm)			
<b>Product Dimensions</b>	L x W x T (Thickness)	370.2 x 284.6 x 54mm		433.5 x 367 x 55.5mm	
	L x W x T (Thickness)	480 x 390 x 150mm		450 x 560 x 60mm	
<b>Others</b>	Touch panel	N/A	ELO 5-wire resistive	N/A	ELO 5-wire resistive
	Metal Keypad	MK15E (Stainless keys, IP65)			
<b>Product Dimensions</b>	L x W x T (Thickness)	370.2 x 284.6 x 54mm		398.4 x 333.9 x 62mm	
	L x W x T (Thickness)	485 x 160 x 395mm		500 x 150 x 445mm	