

SOL

The Industrial Grade Embedded BOX PC



Front Panel



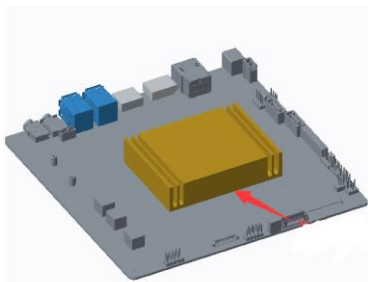
Back Panel

Features:

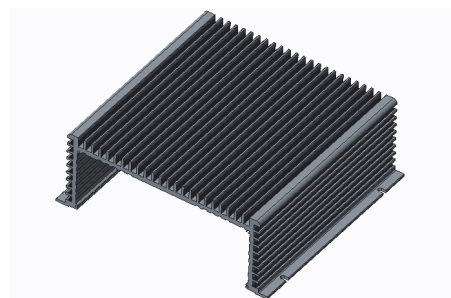
Waved Surface



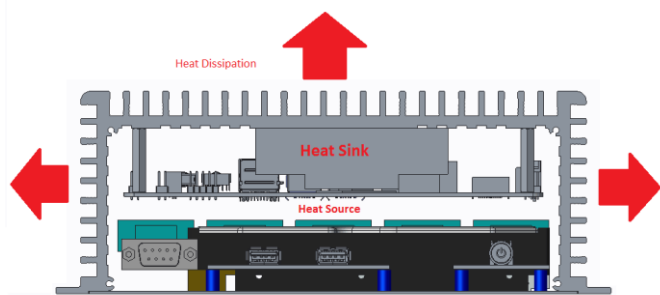
Waved surface heat-sink fins for maximum cooling performance



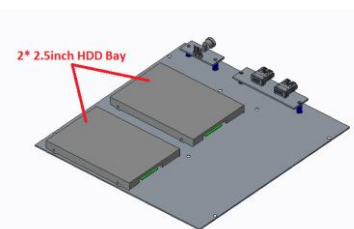
Aluminum Heat Sink + Silicon Connected to the Top Cover for CPU Heat Dissipation



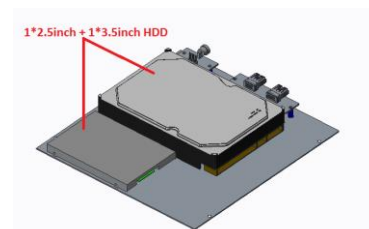
Heat Sink Top and Side Design



Heat Dissipation Example



2* 2.5inch HDD Bay



1*2.5inch + 1*3.5inch HDD

Dual HDD Connection – 2 * 2.5inch or 1 * 2.5inch + 1 * 3.5inch HDD Connection

Specifications:

| | | |
|-------------|-------------------|---|
| CPU | Processor | Integrated Intel® J1900/2.00GHz Quad core, TDP 10W |
| | Chipset | Intel® Bay trail SOC |
| | Memory | 2Gb Ram , Upgradeable up to 8Gb |
| Graphics | Graphics | Integrated Intel® HD Graphics |
| Storage | 2.5' HDD | 320Gb / 500Gb HDD |
| | CF | N/A |
| | SSD | 32Gb / 64Gb / 128Gb SSD |
| Interfaces | Ethernet | 1* RTL8111F 10/100/1000Mbps Ethernet, Support Wake-on-LAN/PXE |
| | USB | 5* USB2.0, 1 x USB3.0 |
| | Serial Port | 6* RS232 COM (COM1 COM2 9pin Can choose live function,COM3 Support RS485/RS422) |
| | Display | 1* VGA |
| | Audio | 2* MIC,2*Line-out |
| | System Control | Power switch |
| | Wireless | 2* WIFI/3G SMA antenna (optional) |
| | Watchdog | Support hardware reset function (L256, 0~255 seconds) |
| Power | Power | 12V/5A adapter (support 8V~36V input) |
| Dimensions | Size | 21* 20.5 * 8.2mm, 2.3kg |
| Reliability | Installation | Desktop or wall-mounted |
| | Operating T | -10°C~60°C |
| | Storage T | -20°C~70°C |
| | Relative humidity | 5%-95%, no condensing |
| | Vibration | 0.5g rms/5~500Hz/random operating |

© 2012 PoS Tektronics Limited. The information contained herein is subject to change without notice.
 PoS Tektronics Limited shall not be liable for technical or editorial errors or omissions contained herein. Microsoft and Windows are trademarks of the Microsoft group of companies. Intel, Core, is trademarks or registered trademarks of Intel Corporation or its subsidiaries in the U.S. and other countries. Please visit relevant websites for more information



PoS Tektronics Limited

Rooms 1318-19, 13 / F, Hollywood Plaza, 610 Nathan Road, Mongkok, Kowloon, Hong Kong

Email: pcpos@yahoo.com